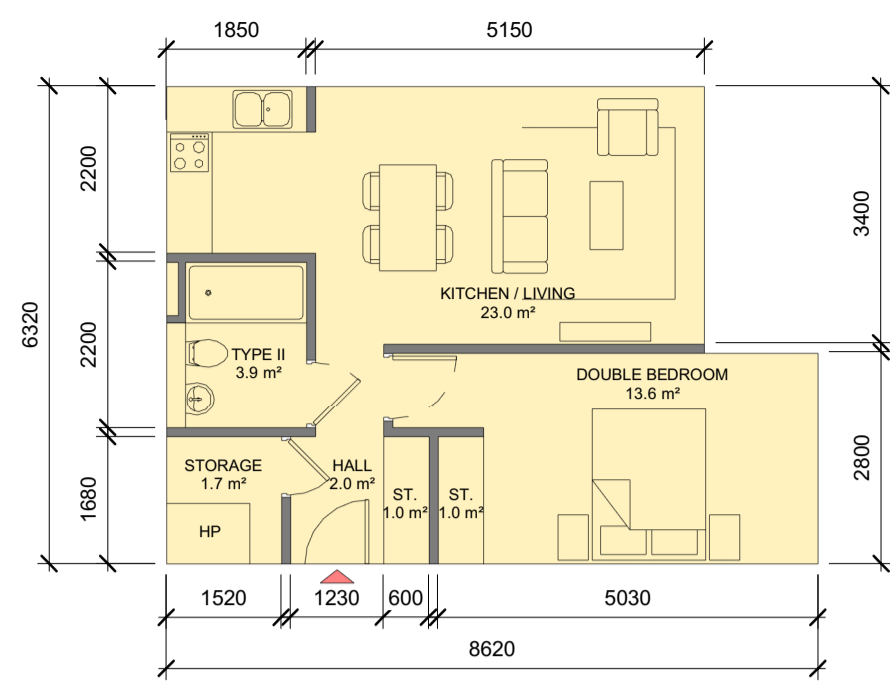


ALL DIMENSIONS TO BE CHECKED ON SITE  
NO DIMENSIONS TO BE SCALED FROM THIS DRAWING  
DRAWING IS TO BE READ IN CONJUNCTION WITH RELEVANT CONSULTANTS DRAWINGS

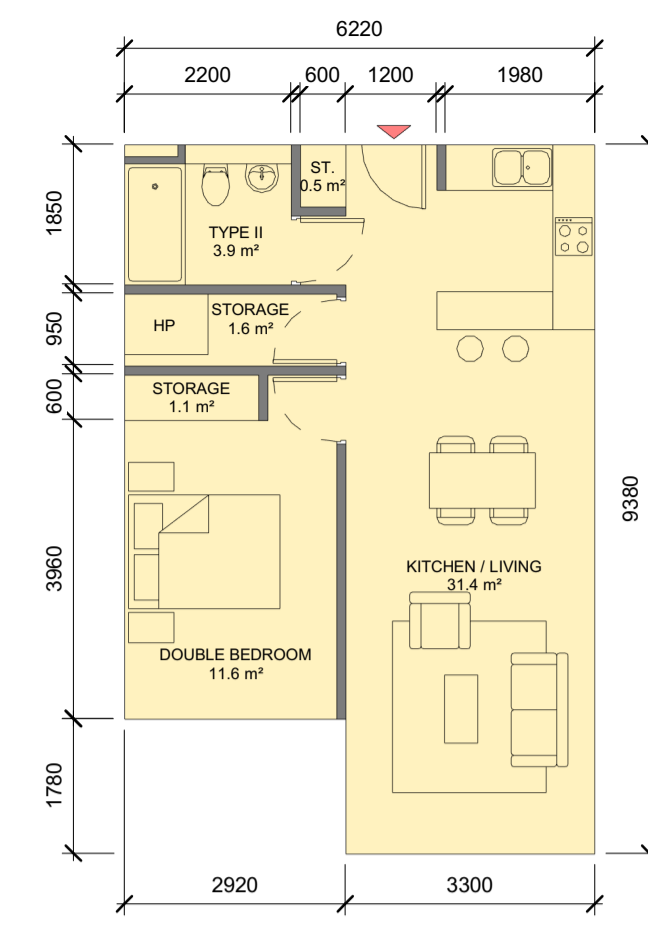
NOTE:  
This drawing only shows internal floor space, balconies are shown on general arrangement plans and areas depicted on HQA



49.2 m<sup>2</sup>

D-1B-I	
Name	Area

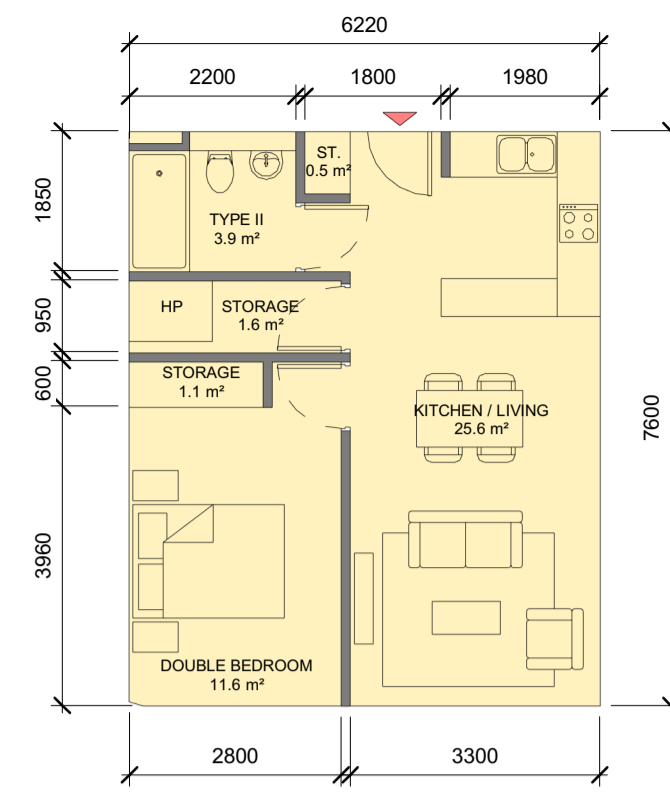
DOUBLE BEDROOM	13.6 m <sup>2</sup>
HALL	2.0 m <sup>2</sup>
KITCHEN / LIVING	23.0 m <sup>2</sup>
ST.	1.0 m <sup>2</sup>
ST.	1.0 m <sup>2</sup>
STORAGE	1.7 m <sup>2</sup>
TYPE II	3.9 m <sup>2</sup>



53.1 m<sup>2</sup>

D-1B-II	
Name	Area

DOUBLE BEDROOM	11.6 m <sup>2</sup>
KITCHEN / LIVING	31.4 m <sup>2</sup>
ST.	0.5 m <sup>2</sup>
STORAGE	1.1 m <sup>2</sup>
STORAGE	1.6 m <sup>2</sup>
TYPE II	3.9 m <sup>2</sup>



47.3 m<sup>2</sup>

D-1B-III	
Name	Area

DOUBLE BEDROOM	11.6 m <sup>2</sup>
KITCHEN / LIVING	25.6 m <sup>2</sup>
ST.	0.5 m <sup>2</sup>
STORAGE	1.6 m <sup>2</sup>
STORAGE	1.1 m <sup>2</sup>
TYPE II	3.9 m <sup>2</sup>

### D-1B-I - SPACE REQUIREMENTS

Apartment Area	Required Apartment Area	Required Area Met	Kitchen - Living Area	Required Kitchen - Living Area	Required Area Met	Total Bedroom Area	Required Total Bedroom Area	Required Area Met	Total Storage Area	Required Total Storage Area	Required Area Met
49.2 m <sup>2</sup>	45.0 m <sup>2</sup>	Yes	23.0 m <sup>2</sup>	23.0 m <sup>2</sup>	Yes	13.6 m <sup>2</sup>	11.4 m <sup>2</sup>	Yes	3.7 m <sup>2</sup>	3.0 m <sup>2</sup>	Yes

1 D-1B-I  
1:100

### D-1B-II - SPACE REQUIREMENTS

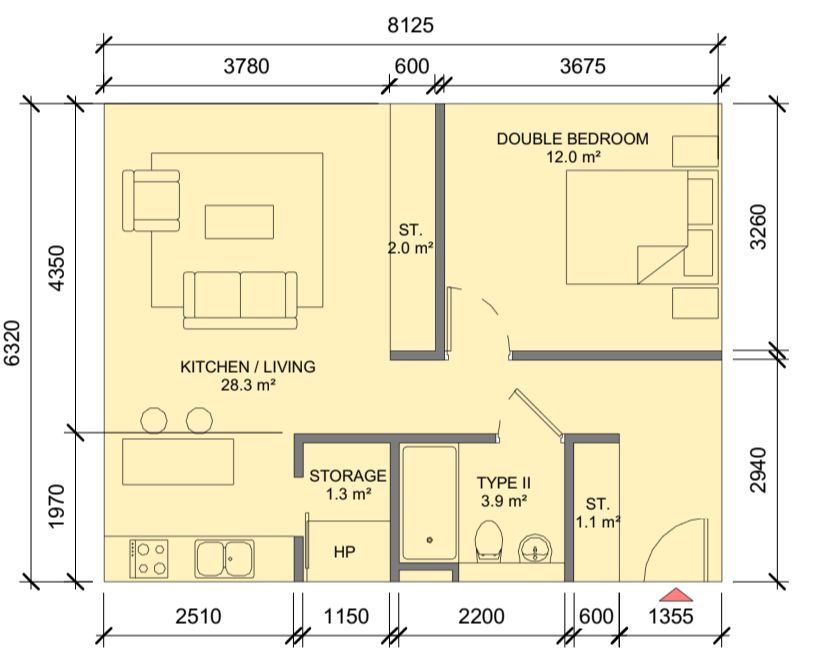
Apartment Area	Required Apartment Area	Required Area Met	Kitchen - Living Area	Required Kitchen - Living Area	Required Area Met	Total Bedroom Area	Required Total Bedroom Area	Required Area Met	Total Storage Area	Required Total Storage Area	Required Area Met
53.1 m <sup>2</sup>	45.0 m <sup>2</sup>	Yes	31.4 m <sup>2</sup>	23.0 m <sup>2</sup>	Yes	11.6 m <sup>2</sup>	11.4 m <sup>2</sup>	Yes	3.2 m <sup>2</sup>	3.0 m <sup>2</sup>	Yes

2 D-1B-II  
1:100

### D-1B-III - SPACE REQUIREMENTS

Apartment Area	Required Apartment Area	Required Area Met	Kitchen - Living Area	Required Kitchen - Living Area	Required Area Met	Total Bedroom Area	Required Total Bedroom Area	Required Area Met	Total Storage Area	Required Total Storage Area	Required Area Met
47.3 m <sup>2</sup>	45.0 m <sup>2</sup>	Yes	25.6 m <sup>2</sup>	23.0 m <sup>2</sup>	Yes	11.6 m <sup>2</sup>	11.4 m <sup>2</sup>	Yes	3.2 m <sup>2</sup>	3.0 m <sup>2</sup>	Yes

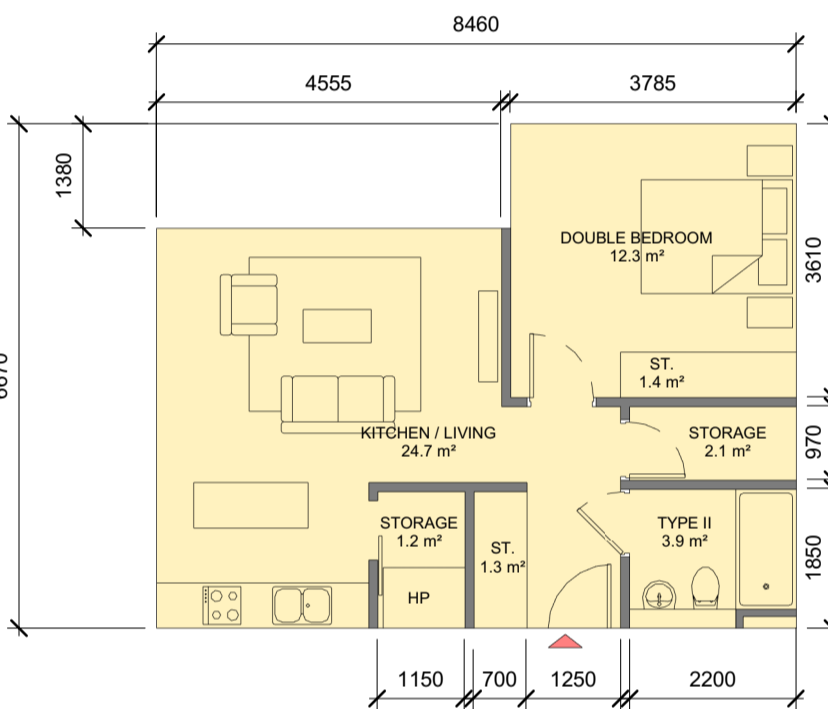
3 D-1B-III  
1:100



51.7 m<sup>2</sup>

D-1B-IV	
Name	Area

DOUBLE BEDROOM	12.0 m <sup>2</sup>
KITCHEN / LIVING	28.3 m <sup>2</sup>
ST.	1.1 m <sup>2</sup>
ST.	2.0 m <sup>2</sup>
STORAGE	1.3 m <sup>2</sup>
TYPE II	3.9 m <sup>2</sup>
TYPE II	1.1 m <sup>2</sup>



50.0 m<sup>2</sup>

D-1B-V	
Name	Area

DOUBLE BEDROOM	12.3 m <sup>2</sup>
KITCHEN / LIVING	24.7 m <sup>2</sup>
ST.	1.4 m <sup>2</sup>
ST.	1.4 m <sup>2</sup>
STORAGE	2.1 m <sup>2</sup>
STORAGE	1.2 m <sup>2</sup>
TYPE II	3.9 m <sup>2</sup>

### D-1B-IV - SPACE REQUIREMENTS

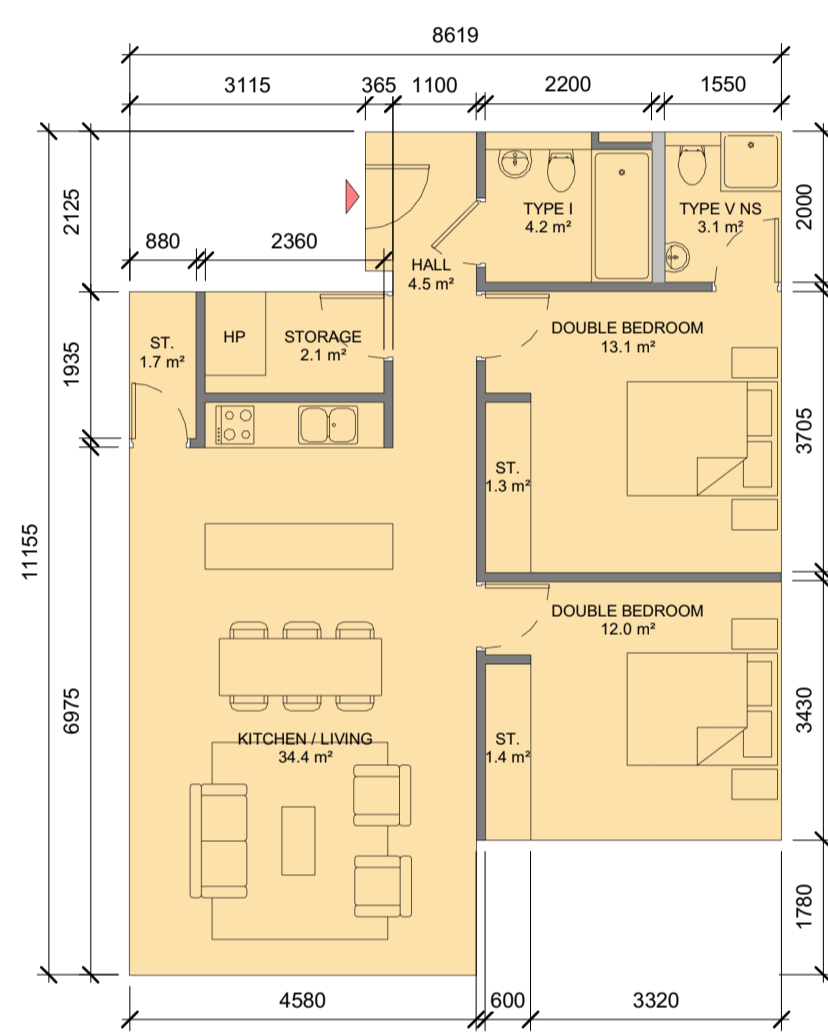
Apartment Area	Required Apartment Area	Required Area Met	Kitchen - Living Area	Required Kitchen - Living Area	Required Area Met	Total Bedroom Area	Required Total Bedroom Area	Required Area Met	Total Storage Area	Required Total Storage Area	Required Area Met
51.7 m <sup>2</sup>	45.0 m <sup>2</sup>	Yes	28.3 m <sup>2</sup>	23.0 m <sup>2</sup>	Yes	12.0 m <sup>2</sup>	11.4 m <sup>2</sup>	Yes	4.4 m <sup>2</sup>	3.0 m <sup>2</sup>	Yes

4 D-1B-IV  
1:100

### D-1B-V - SPACE REQUIREMENTS

Apartment Area	Required Apartment Area	Required Area Met	Kitchen - Living Area	Required Kitchen - Living Area	Required Area Met	Total Bedroom Area	Required Total Bedroom Area	Required Area Met	Total Storage Area	Required Total Storage Area	Required Area Met
50.0 m <sup>2</sup>	45.0 m <sup>2</sup>	Yes	24.7 m <sup>2</sup>	23.0 m <sup>2</sup>	Yes	12.3 m <sup>2</sup>	11.4 m <sup>2</sup>	Yes	6.0 m <sup>2</sup>	3.0 m <sup>2</sup>	Yes

5 D-1B-V  
1:100



82.2 m<sup>2</sup>

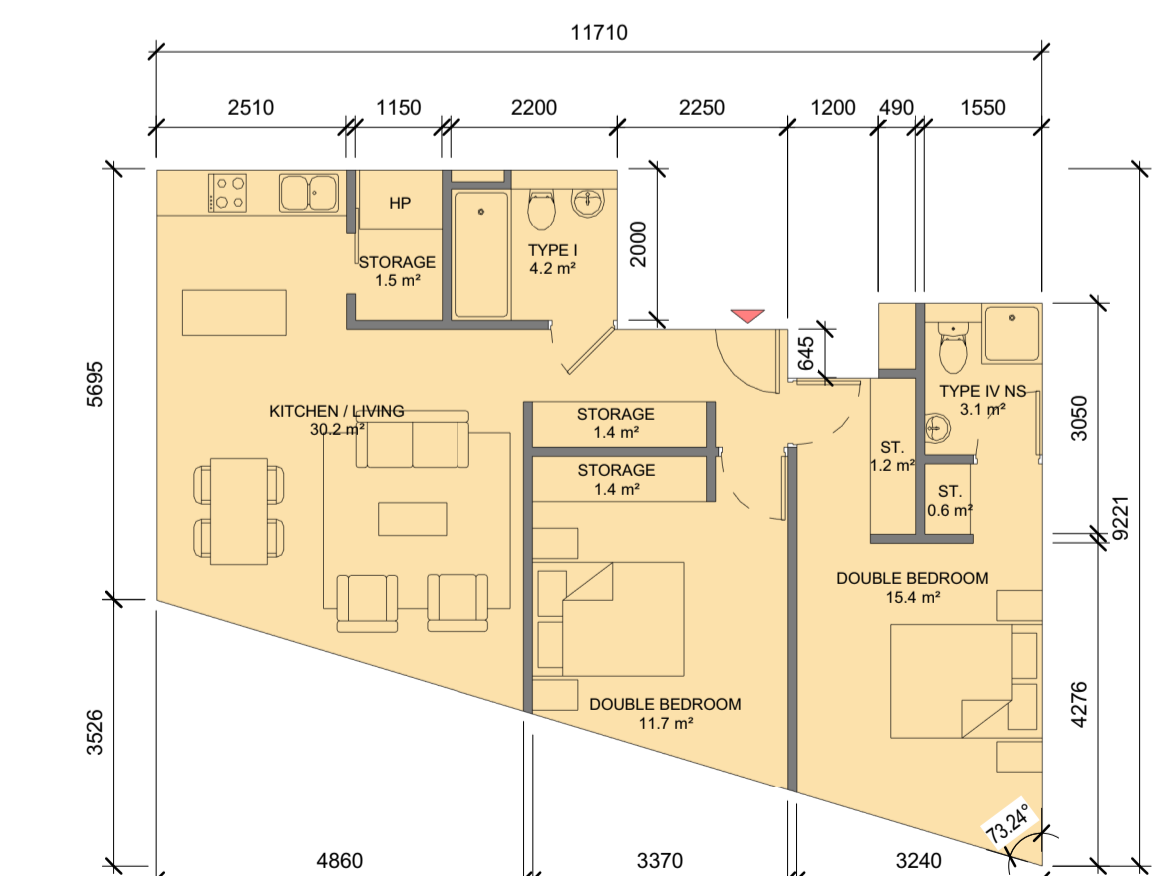
D-2B-I	
Name	Area

DOUBLE BEDROOM	13.1 m <sup>2</sup>
DOUBLE BEDROOM	12.0 m <sup>2</sup>
DOUBLE BEDROOM	14.7 m <sup>2</sup>
DOUBLE BEDROOM	13.8 m <sup>2</sup>
HALL	4.5 m <sup>2</sup>
KITCHEN / LIVING	34.4 m <sup>2</sup>
KITCHEN / LIVING	38.9 m <sup>2</sup>
ST.	1.7 m <sup>2</sup>
ST.	1.3 m <sup>2</sup>
ST.	1.4 m <sup>2</sup>
ST.	1.7 m <sup>2</sup>
STORAGE	2.1 m <sup>2</sup>
TYPE I	4.2 m <sup>2</sup>
TYPE I	4.2 m <sup>2</sup>
TYPE V NS	3.1 m <sup>2</sup>
TYPE V NS	3.1 m <sup>2</sup>

### D-2B-I - SPACE REQUIREMENTS

Apartment Area	Required Apartment Area	Required Area Met	Kitchen - Living Area	Required Kitchen - Living Area	Required Area Met	Total Bedroom Area	Required Total Bedroom Area	Required Area Met	Total Storage Area	Required Total Storage Area	Required Area Met
82.2 m <sup>2</sup>	73.0 m <sup>2</sup>	Yes	34.4 m <sup>2</sup>	30.0 m <sup>2</sup>	Yes	25.1 m <sup>2</sup>	24.4 m <sup>2</sup>	Yes	6.5 m <sup>2</sup>	6.0 m <sup>2</sup>	Yes

6 D-2B-I  
1:100



75.4 m<sup>2</sup>

D-2B-II	
Name	Area

DOUBLE BEDROOM	11.7 m <sup>2</sup>
DOUBLE BEDROOM	15.4 m <sup>2</sup>
KITCHEN / LIVING	30.2 m <sup>2</sup>
ST.	1.2 m <sup>2</sup>
ST.	0.6 m <sup>2</sup>
STORAGE	1.5 m <sup>2</sup>
STORAGE	1.4 m <sup>2</sup>
STORAGE	1.4 m <sup>2</sup>
STORAGE	1.4 m <sup>2</sup>
TYPE I	4.2 m <sup>2</sup>
TYPE IV NS	3.1 m <sup>2</sup>

### D-2B-II - SPACE REQUIREMENTS

Apartment Area	Required Apartment Area	Required Area Met	Kitchen - Living Area	Required Kitchen - Living Area	Required Area Met	Total Bedroom Area	Required Total Bedroom Area	Required Area Met	Total Storage Area	Required Total Storage Area	Required Area Met
75.4 m <sup>2</sup>	73.0 m <sup>2</sup>	Yes	30.2 m <sup>2</sup>	30.0 m <sup>2</sup>	Yes	27.1 m <sup>2</sup>	24.4 m <sup>2</sup>	Yes	6.1 m <sup>2</sup>	6.0 m <sup>2</sup>	Yes

7 D-2B-II  
1:100

REV	DATE	DESCRIPTION	CHK	DRN
A2	15.11.2019	ISSUED FOR PLANNING APPROVAL	RJ	HJL
A1	18.07.2019	ISSUED FOR ABP PRE-APPLICATION	RJ	BM

STATUS CODE DESCRIPTION  
**ISSUED FOR PLANNING APPROVAL**

CLIENT  
SANDYFORD GP Ltd.

PROJECT  
SANDYFORD CENTRAL

DRAWING  
PROPOSED APARTMENTS BLOCK D

PROJECT NUMBER  
950572

DATE  
18/07/2019

SCALE@ A1:  
1:100

DRAWN/CHECKED:  
SR/ SR

REVISION  
A2

DRAWING NUMBER  
SFC-HJL-XX-ZZ-DR-A-8103

STATUS CODE:  
A1

# Henry J Lyons

Architecture + Interiors  
henryjlyons.com

+353 1 898 3333  
info@henryjlyons.com

51-54 Pearse Street  
Dublin D02 K466